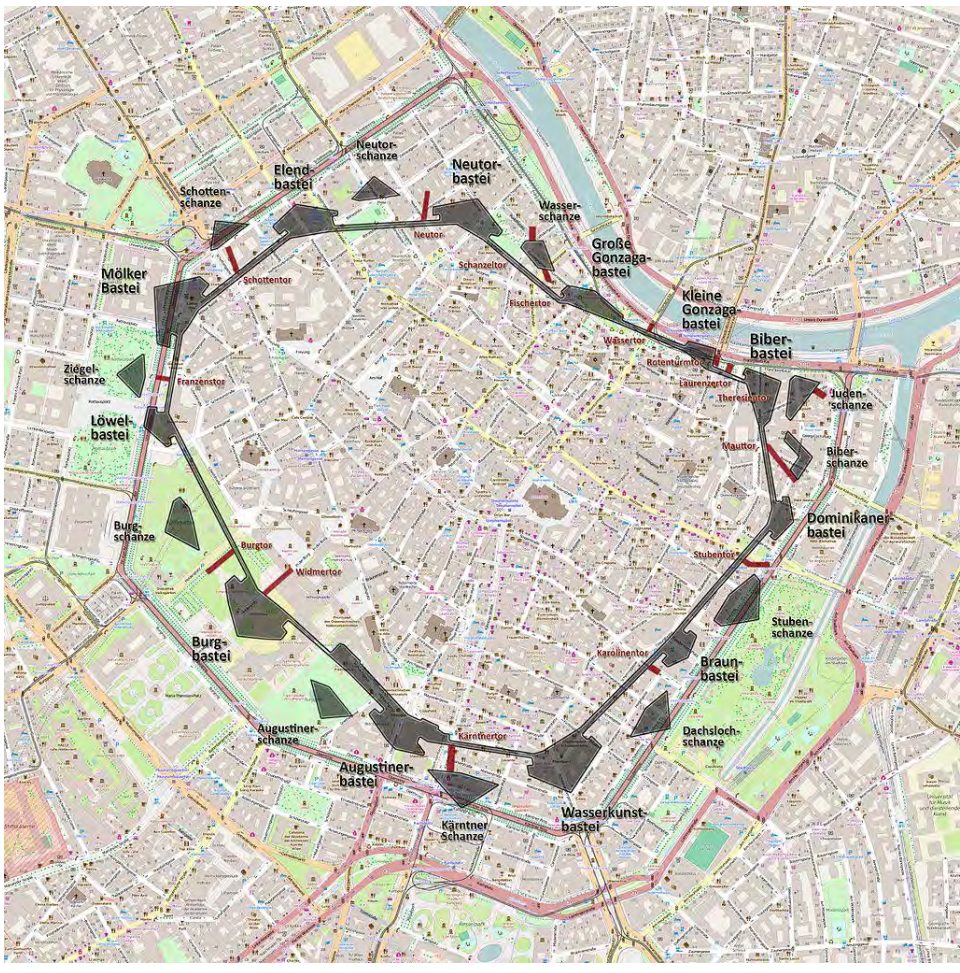




Vienna | 2015 |



Wien Inner City | 1809 |



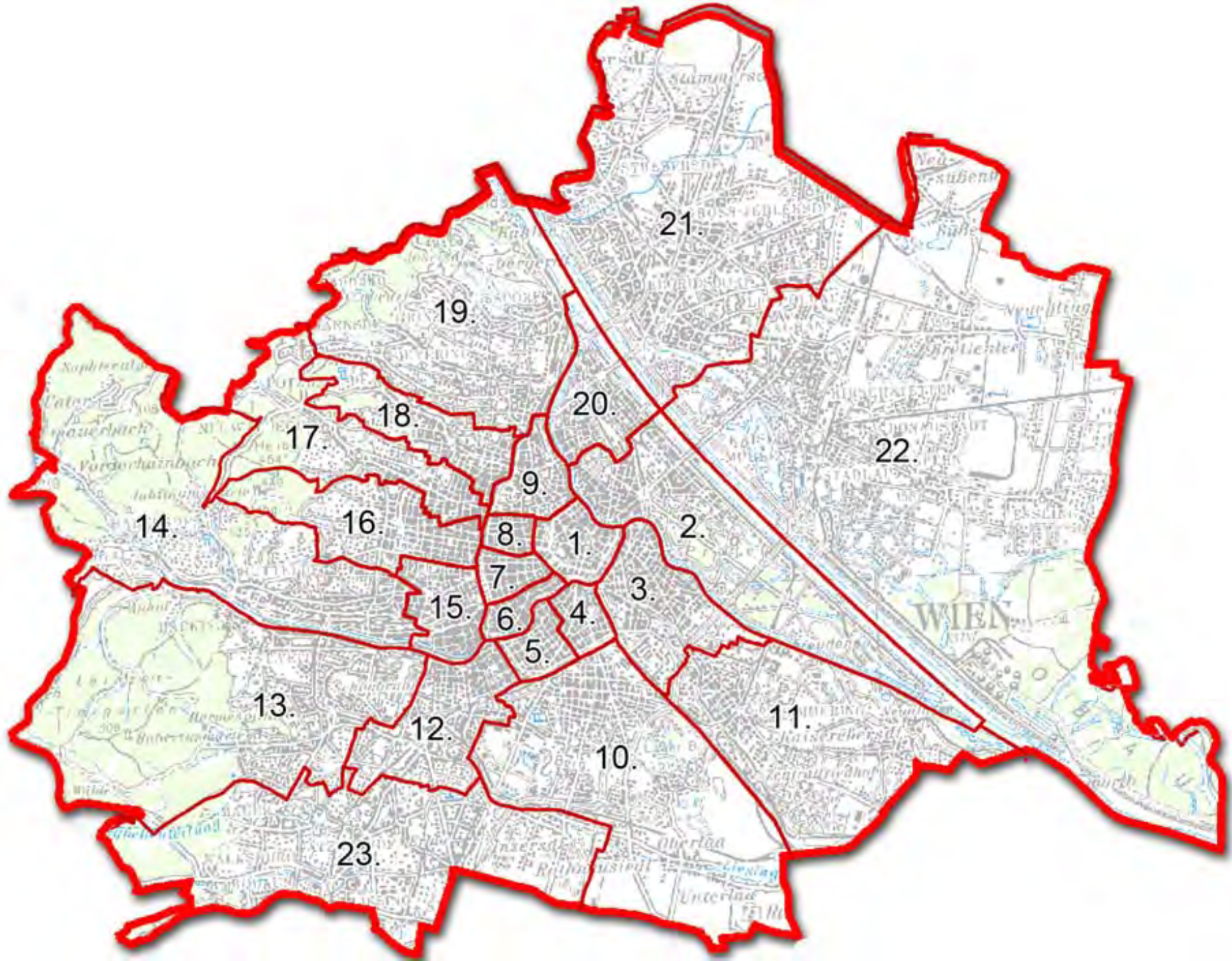
Turkish Siege | 1529 and 1683 |



Linienwall | 1704 | Linienwall 3. District | 2016 |



Suburbs connected to Vienna | Districts 1 - 8 | 1850 |





Theophil Hansen | Parliament | 1883 |



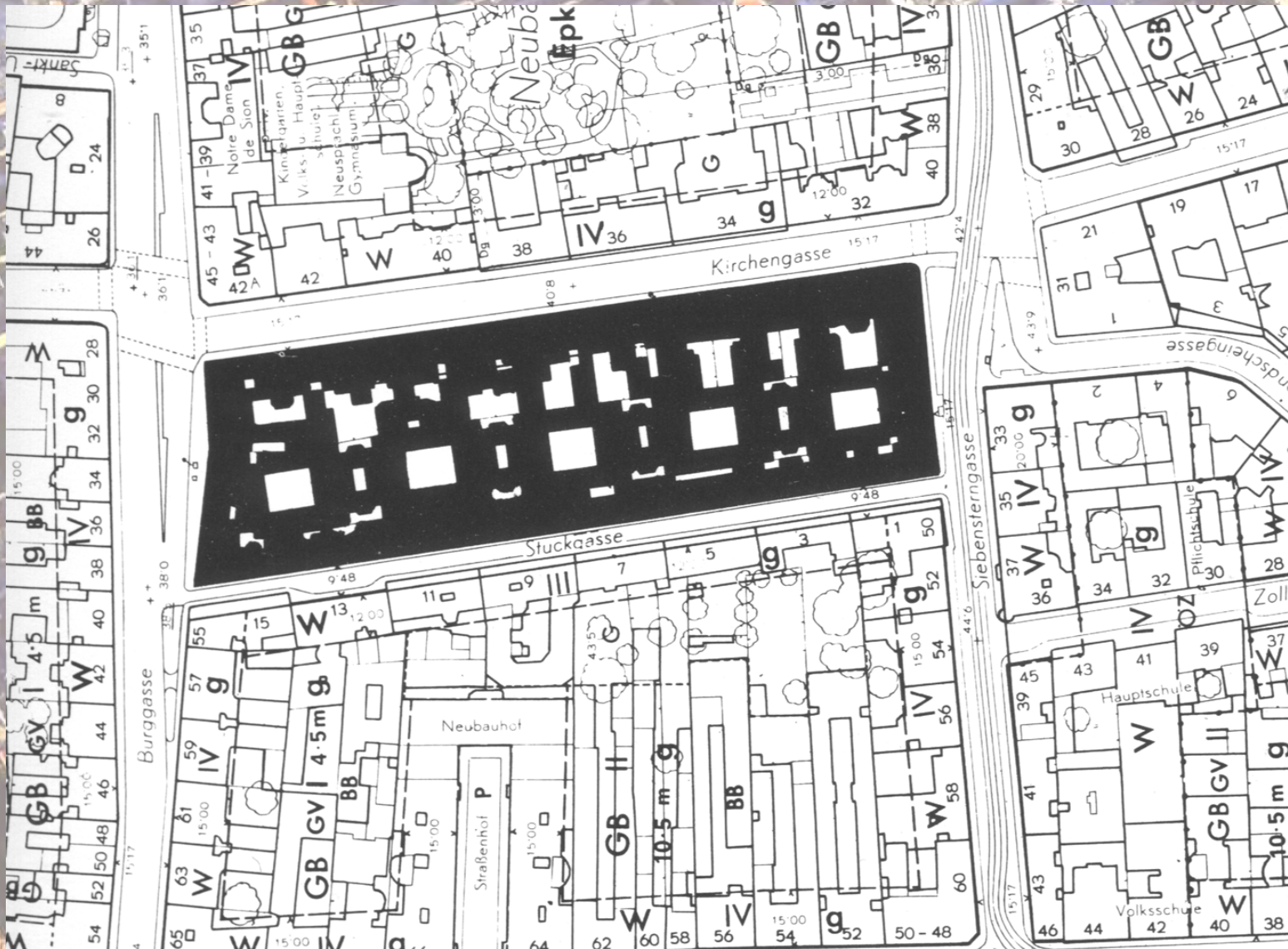
Parlament | 2016 |



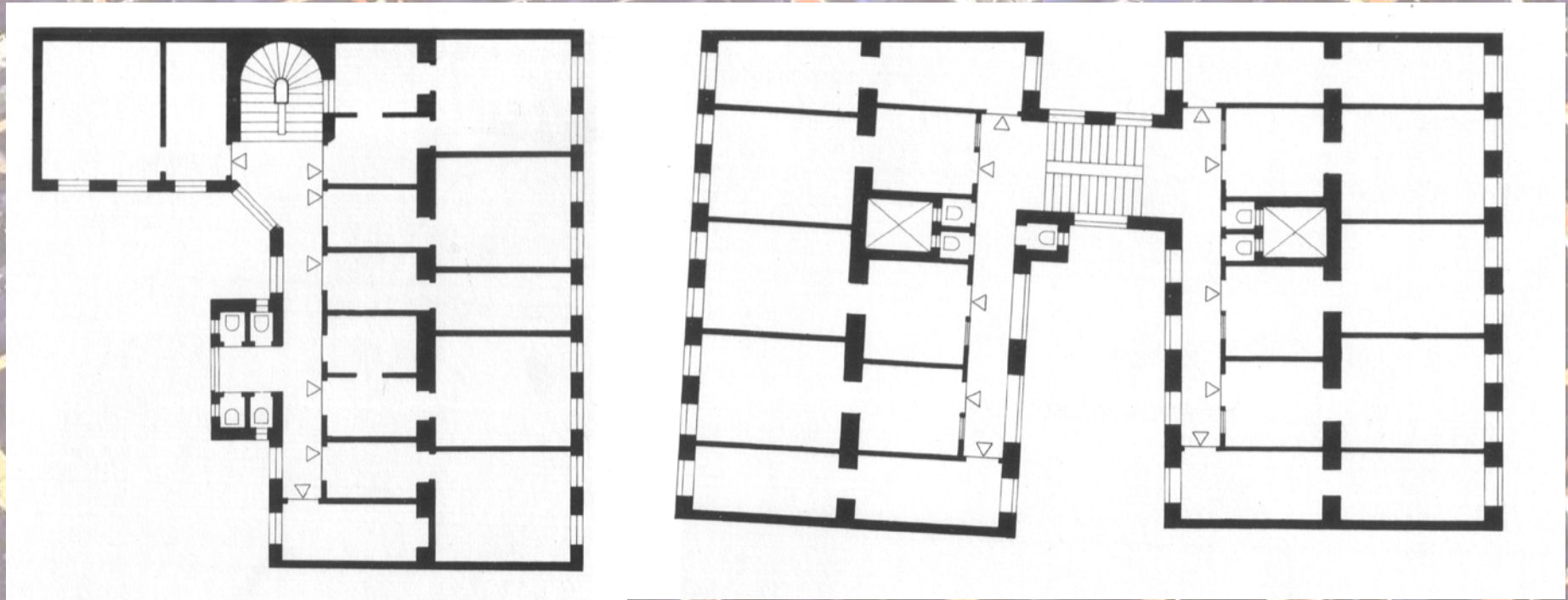
Vienna | 2015 |



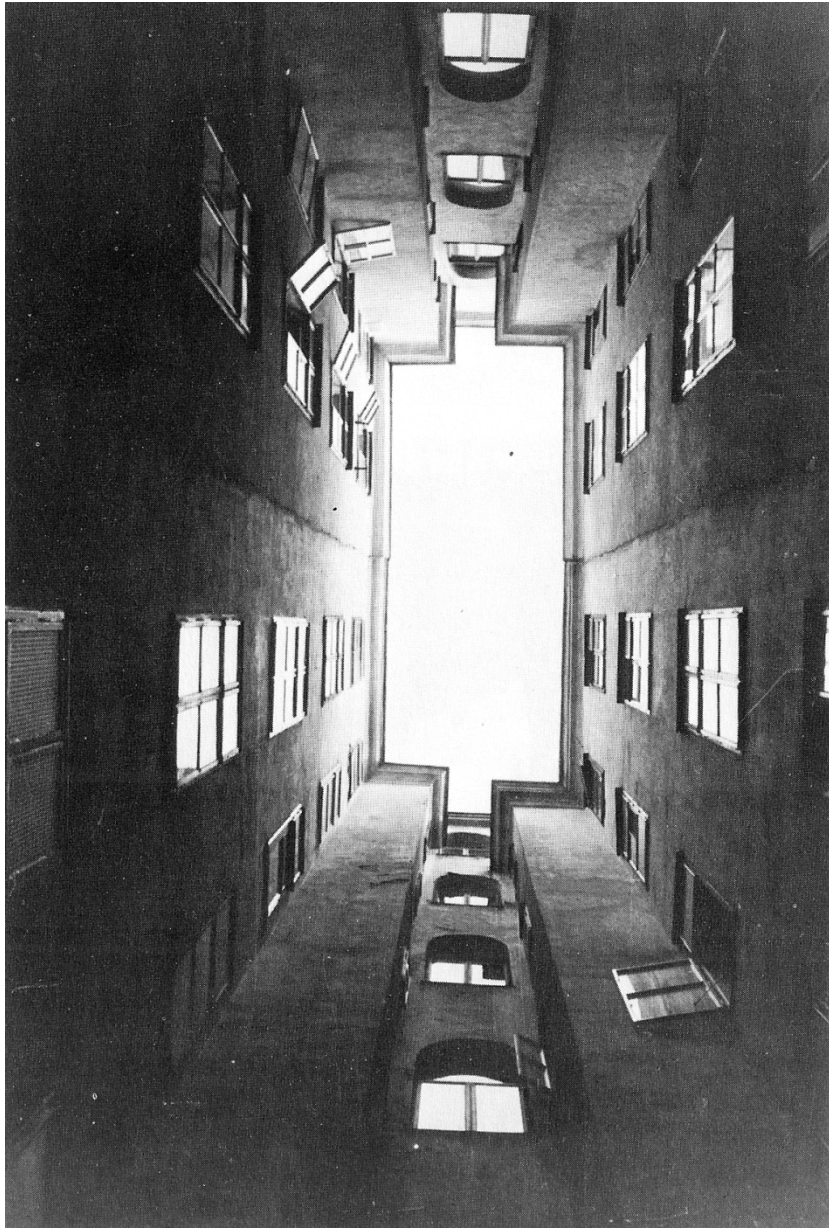
Gründerzeit | 1900 |



Gründerzeit Block | 1900 |



Floor Plan Mietskaserne



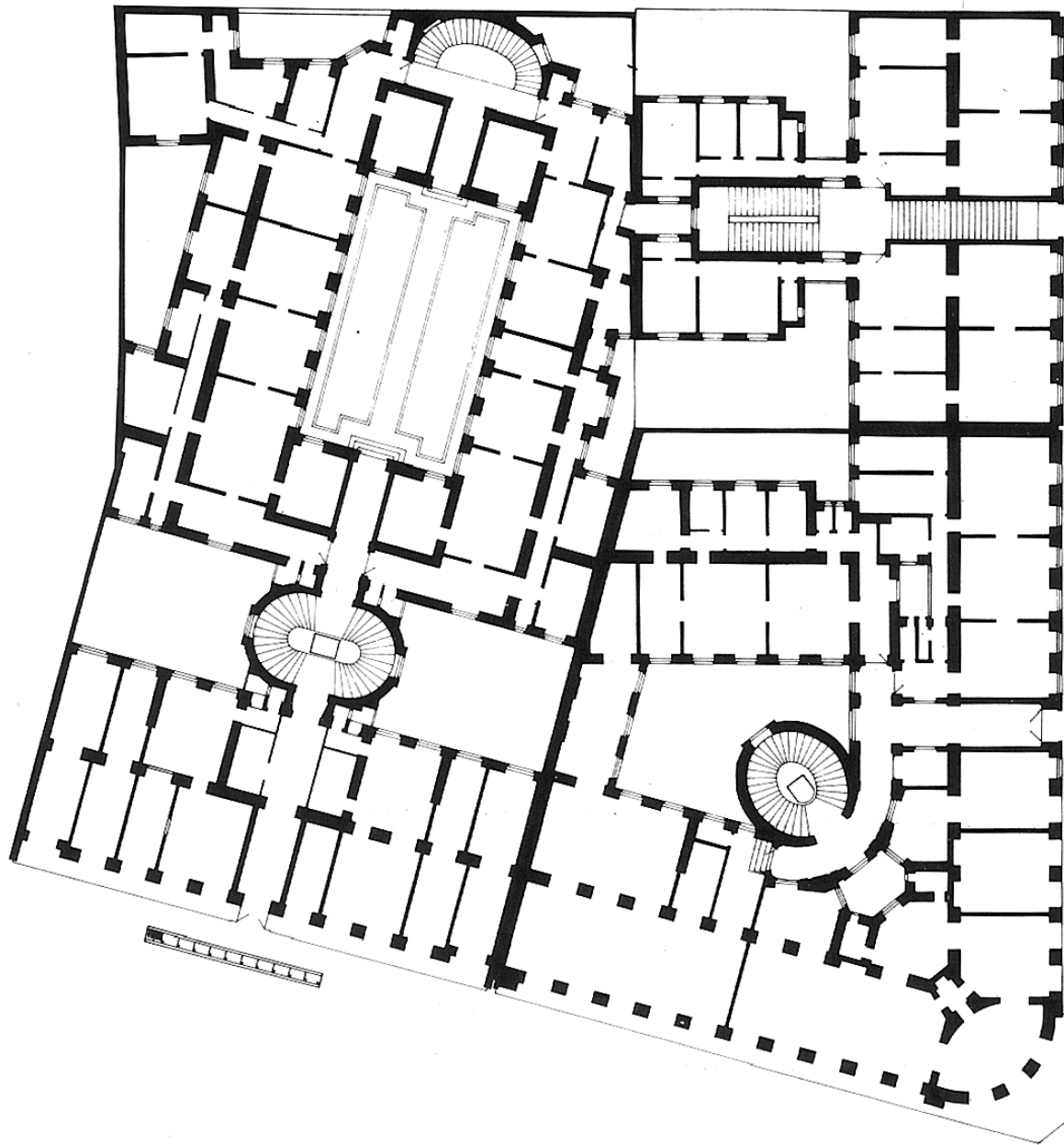
The Courtyards | 1900 |



Living Situations | Mietskaserne | 1900 |



Otto Wagner | Wohnhäuser Wienzeile | 1898/99 |

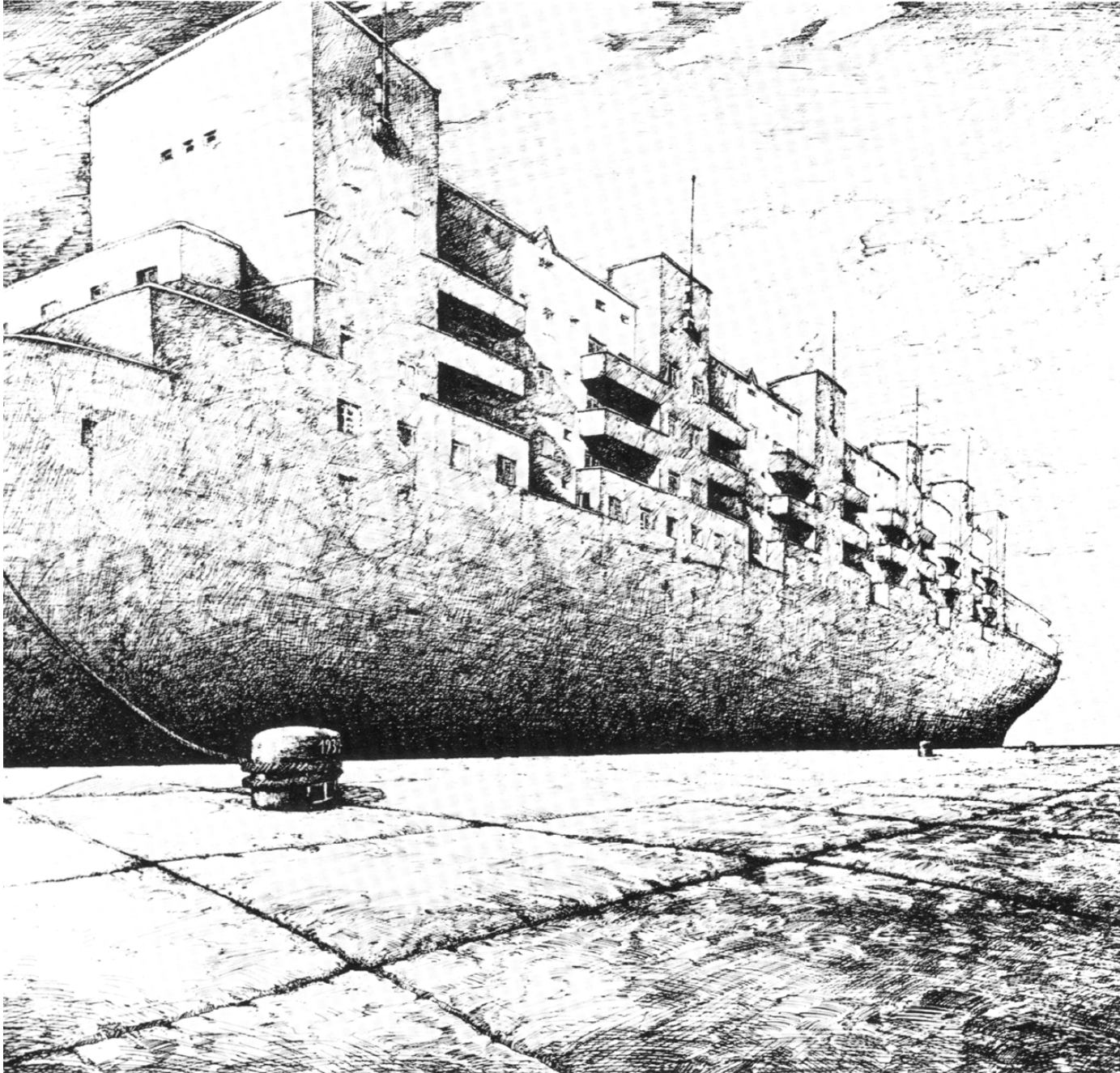


Otto Wagner | Wohnhäuser Wienzeile | 1898/99 |

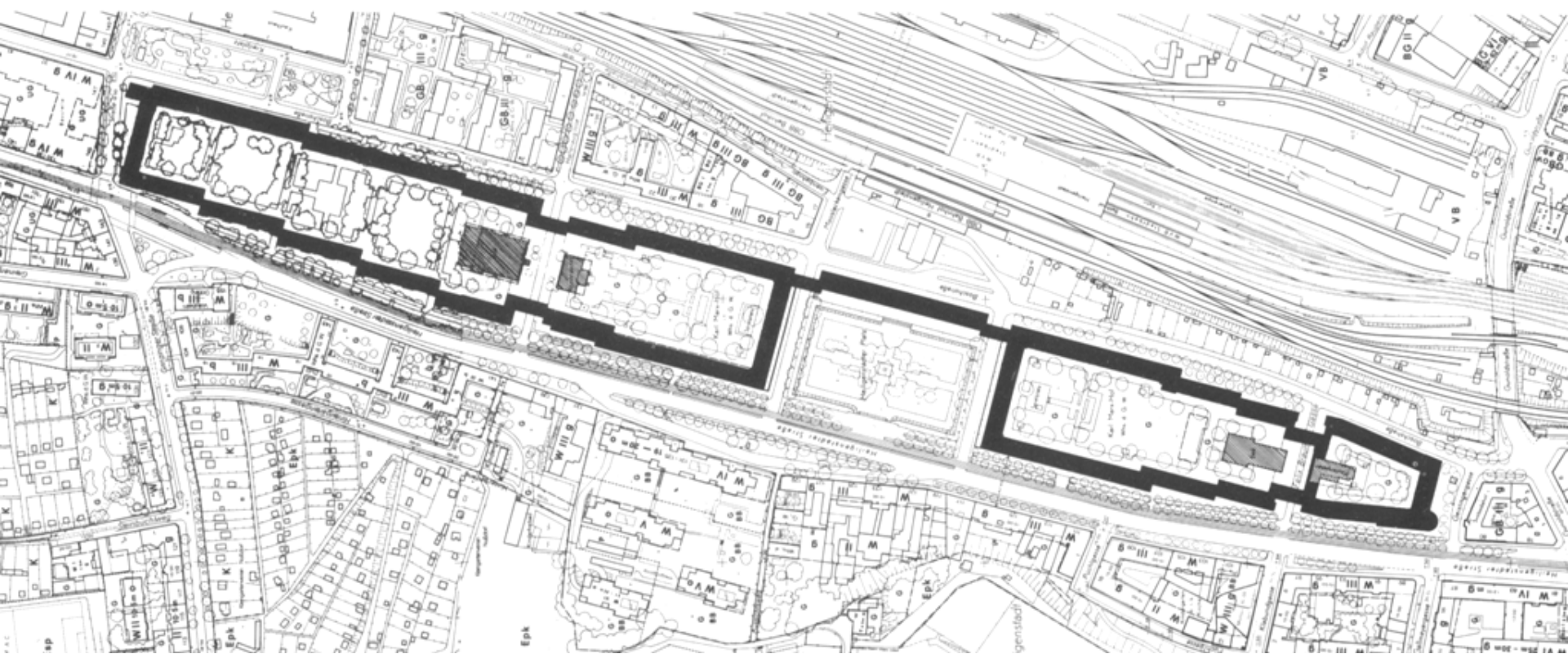




Mieterschutz | Kaiser Karl I | 1917 | protection of tenants



Karl Ehn | Karl Marx Hof | 1927-30 |



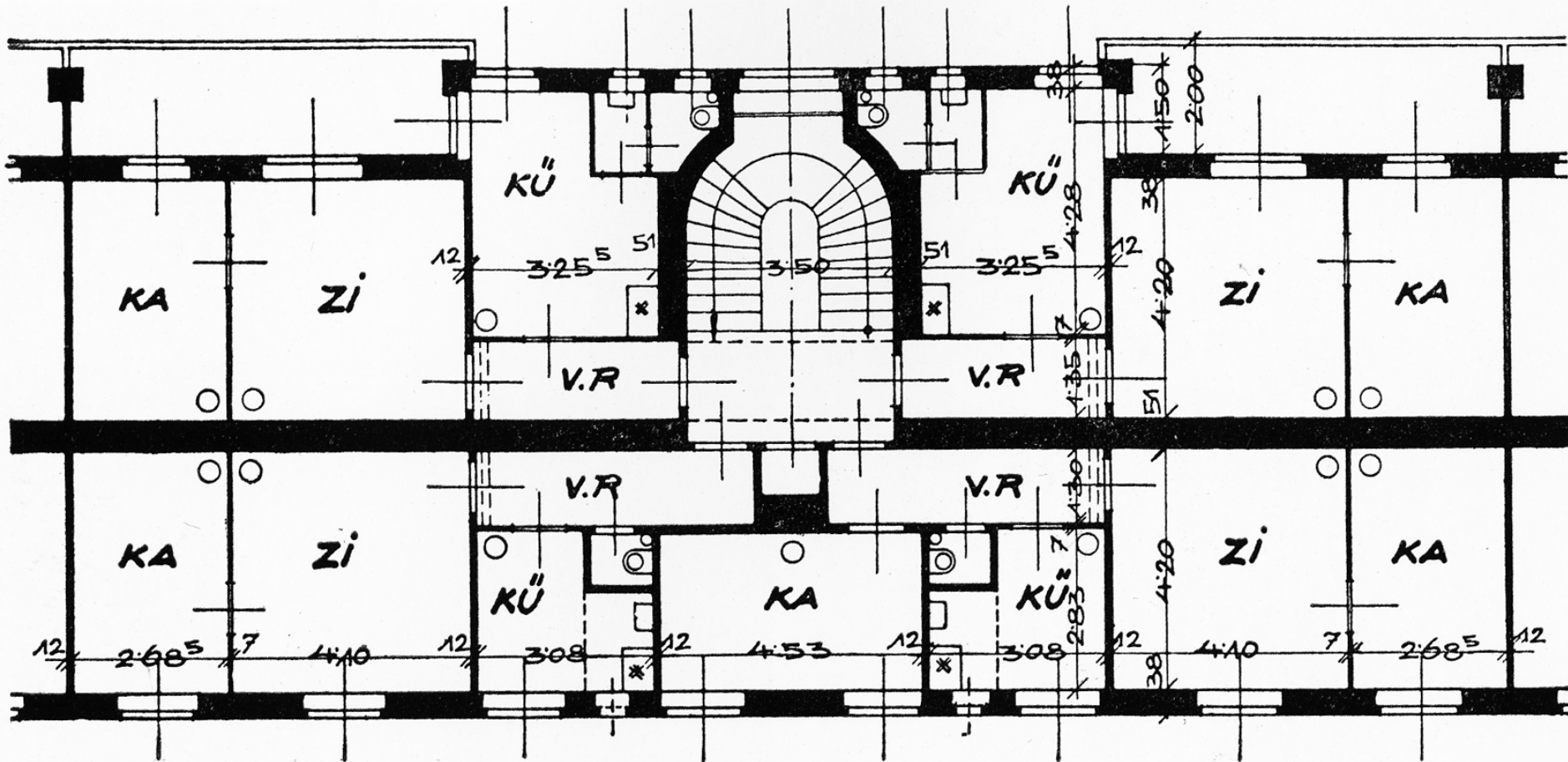
Karl Ehn | Karl Marx Hof | 1927-30 | 1382 apartments |



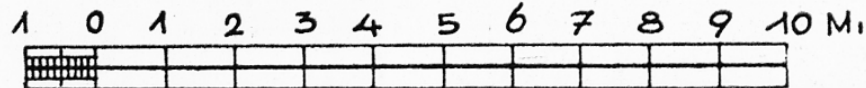
Karl Ehn | Karl Marx Hof | 1927-30 |



Karl Ehn | Karl Marx Hof | 1927-30 |



MASZTAB





Bügelzimmer | Am Tivoli | 1931 | Frankfurter kitchen | M. Schütte Lihotzky |12926 |



Jakob Reumann Hof | Architekt Hubert Gessner| 1926 |



60.000
sind's bisher,
80.000
sollen es werden!





Settler movement | 1920 | Siedlerbewegung |



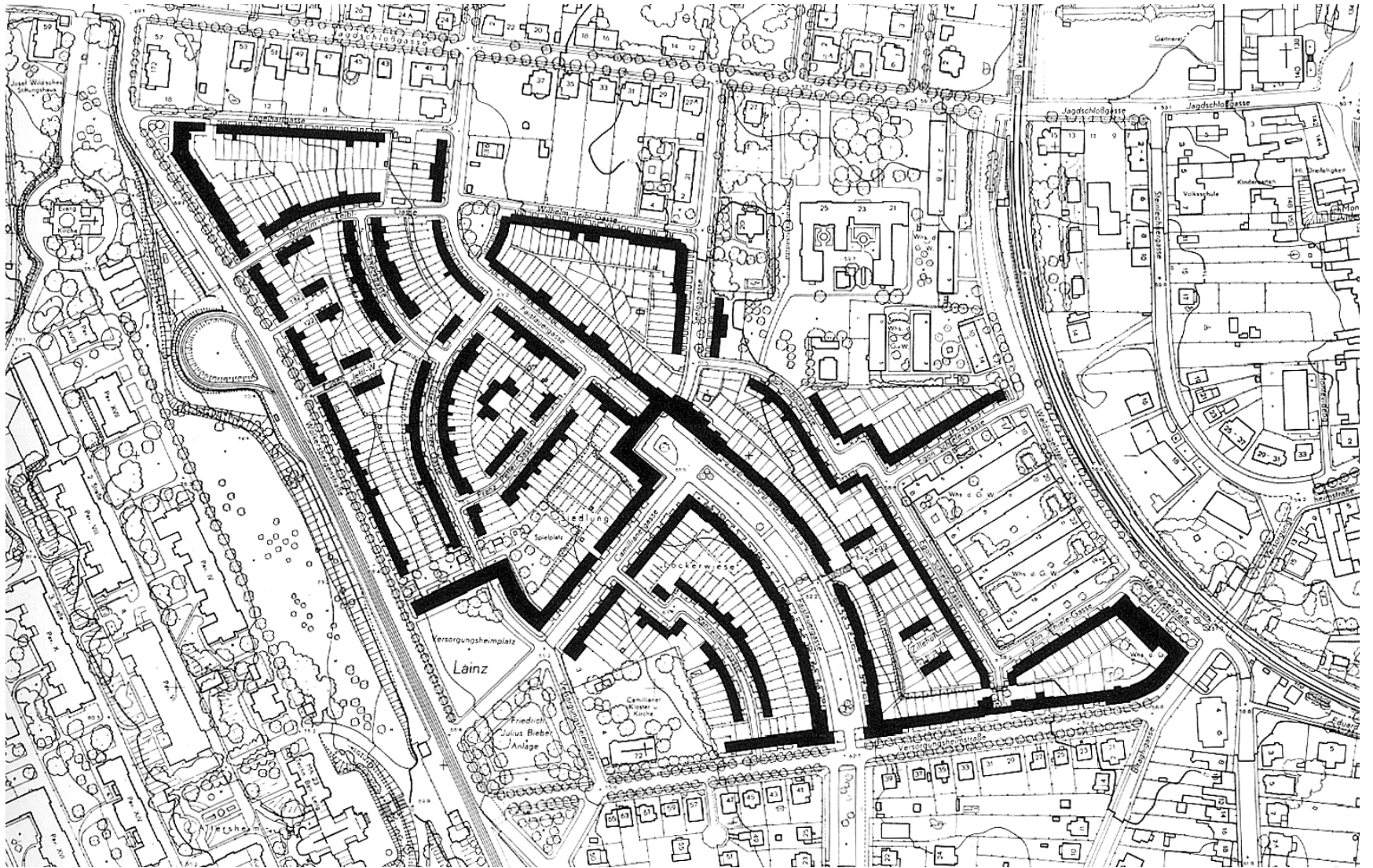
Josef Frank | Siedlung Hoffingergasse | 1924 | Settler movement |



1000 hours of work | Settler movement |



Karl Schartelmüller | Settlement Lockerwiese | 1927 |



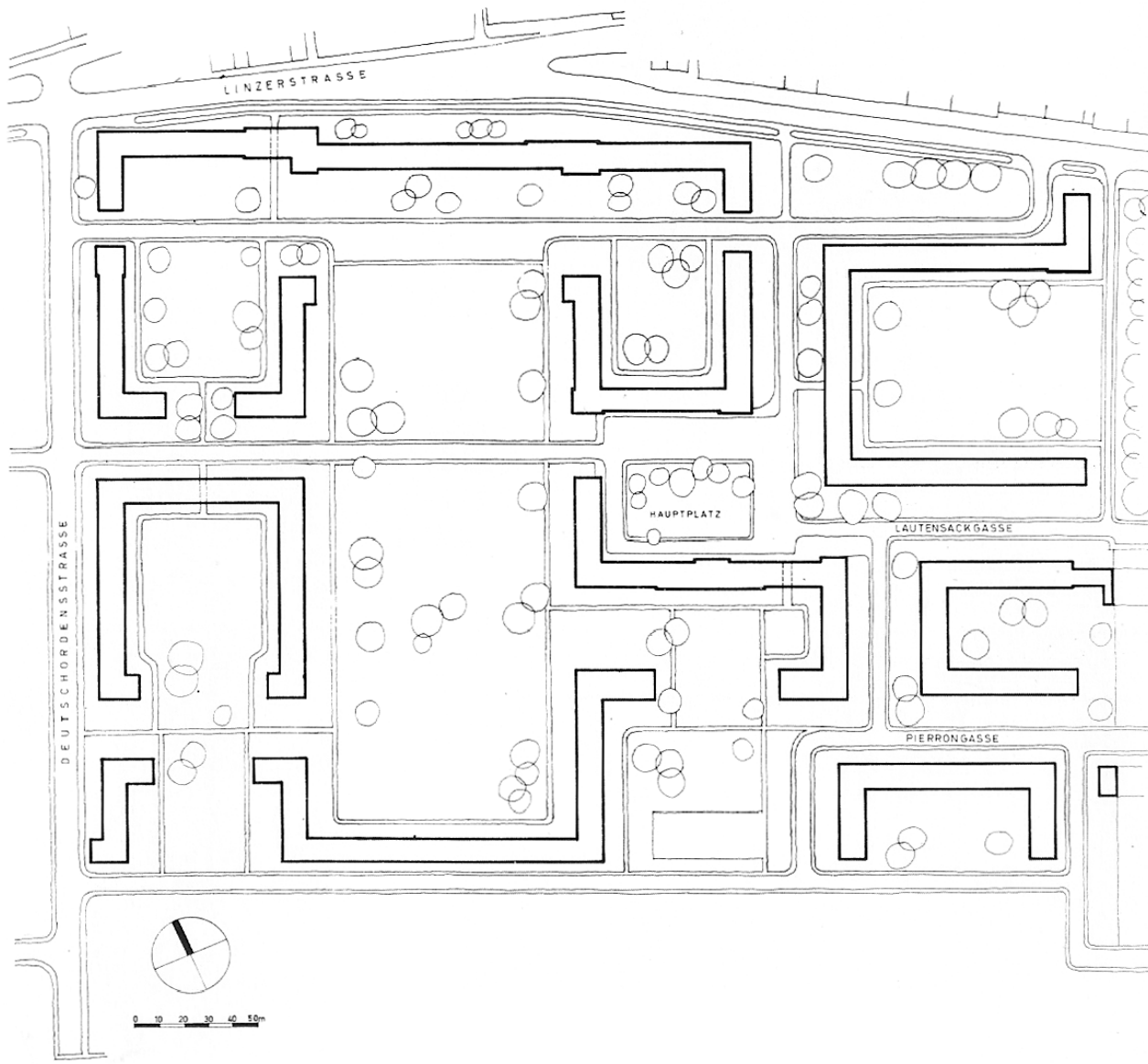
Karl Schartelmüller | Settlement Lockerwiese | 1927-31 |



After 1945



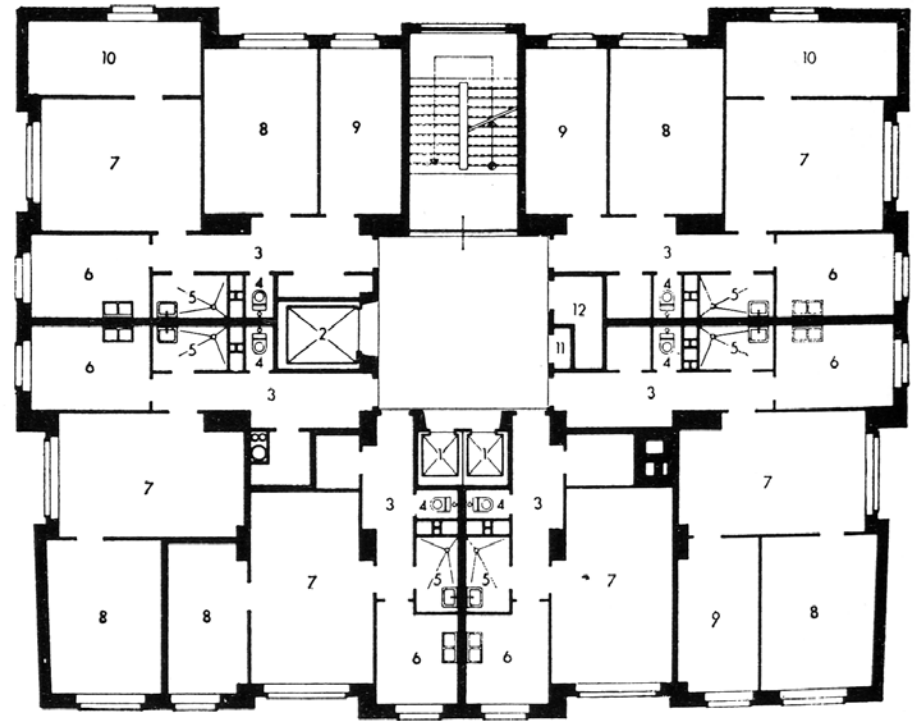
After 1945



Lippert, Fabrici, Purr, Widmann | Hugo-Breitner-Hof | 1948-54 | 1126 WE |



Schuster / Simony / Pangratz / Wörle | Hugo-Breitner-Hof | 1947-54 | 1126 WE |



L.Hruska und K.Schlauss | Matzleinsdorferplatz | 1954-58 |

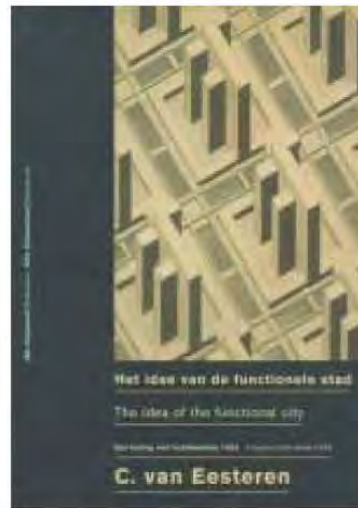
Wohnungsgrößen und Typen in den Jahren 1958 bis 1961

Type	Wohnungsgröße	Raumprogramm	Anteil
A	26 m ² – 28 m ²	Wohnzimmer, Küche, Bad, WC, Vorraum	10%
B	51,5 m ²	Wohnzimmer, Küche, Schlaf- zimmer, Bad, WC, Vorraum	45%
C	63,0 m ²	Wohnzimmer, Küche, Schlaf- zimmer, Kammer, Bad, WC, Vorraum	35%
D	76,5 m ²	Wohnzimmer, Küche, Schlaf- zimmer, 2 Kammern, Bad, WC, Vorraum	10%

CIAM – The Functional City (1933)



Plakat einer CIAM Konferenz, 1949



Van Eesteren:
The idea of the functional city,
1928



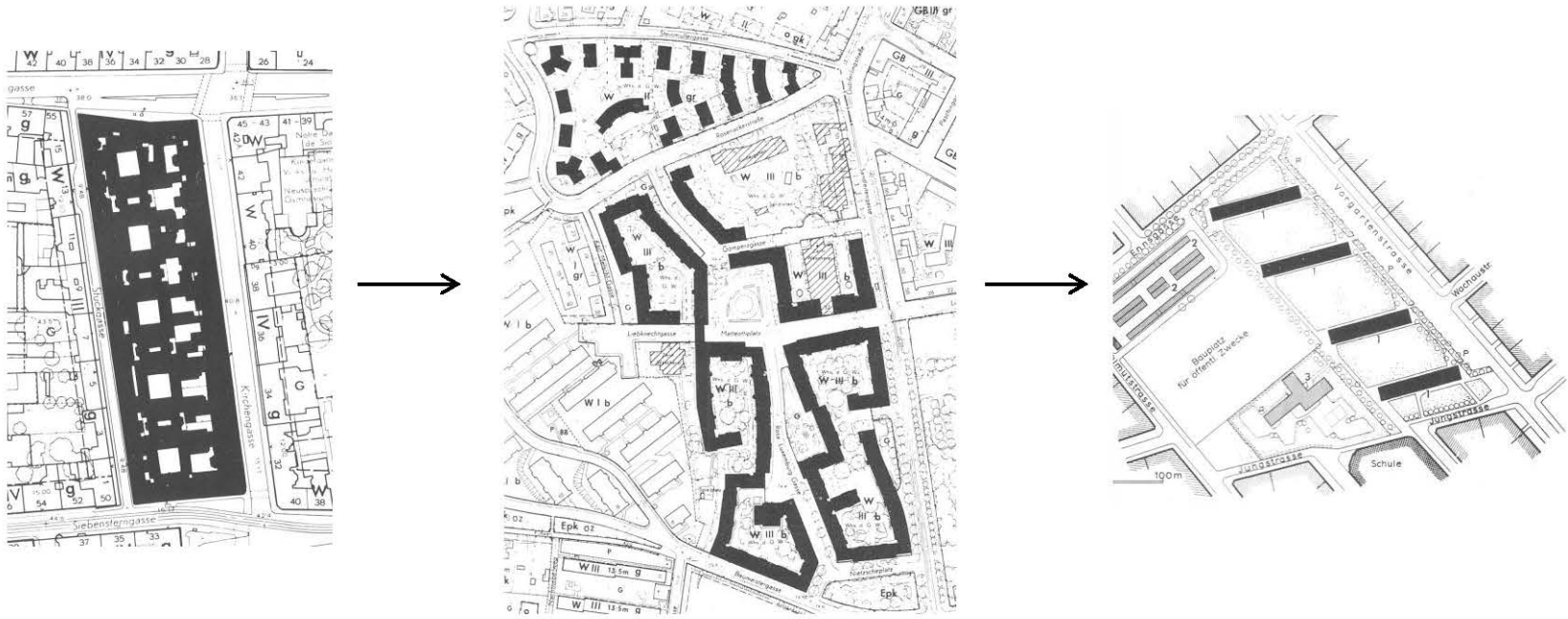
Le Corbusier: Plan Voisin für Paris, 1925

Wiener Montagebau

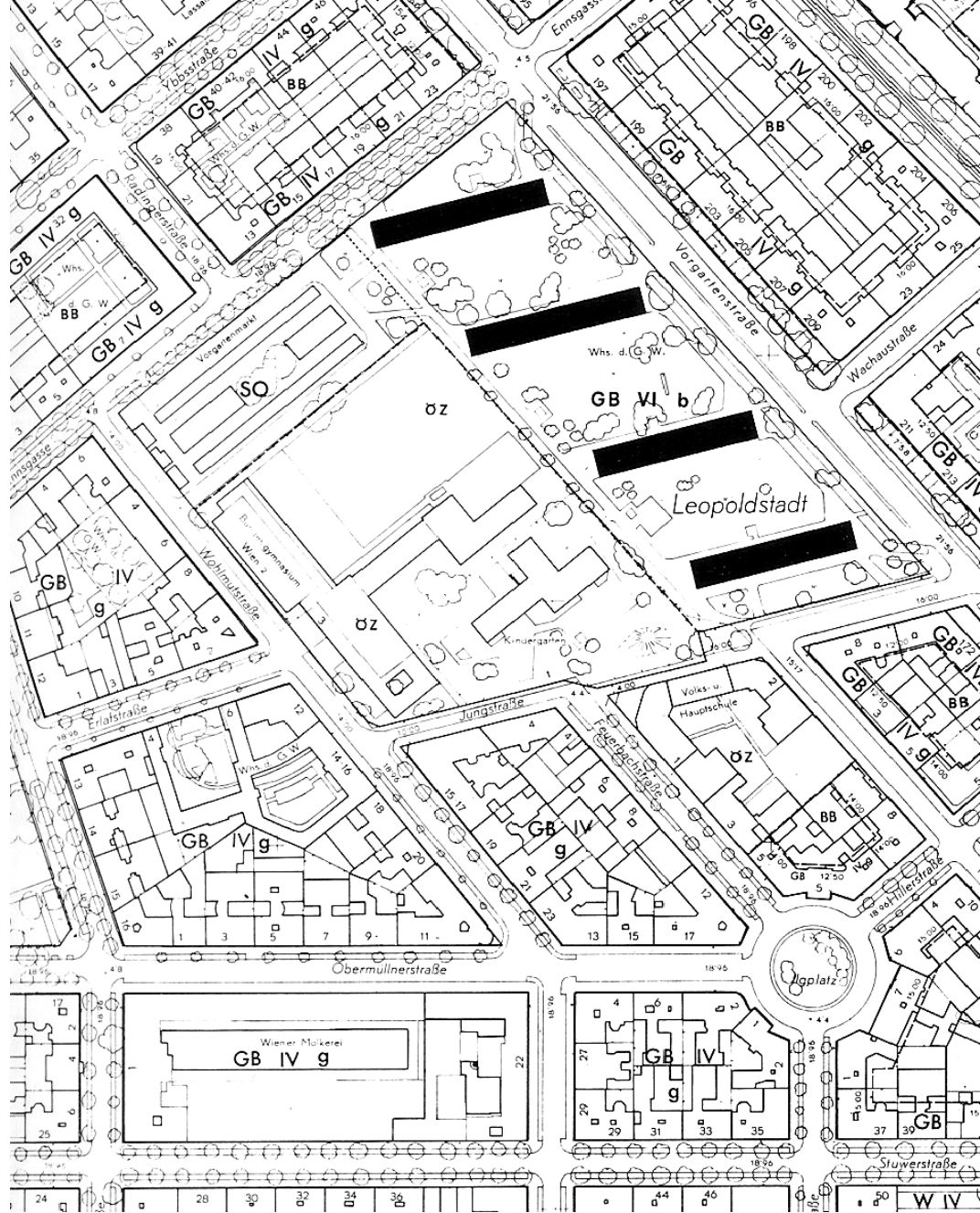


Großplattenbauweise „Camus“





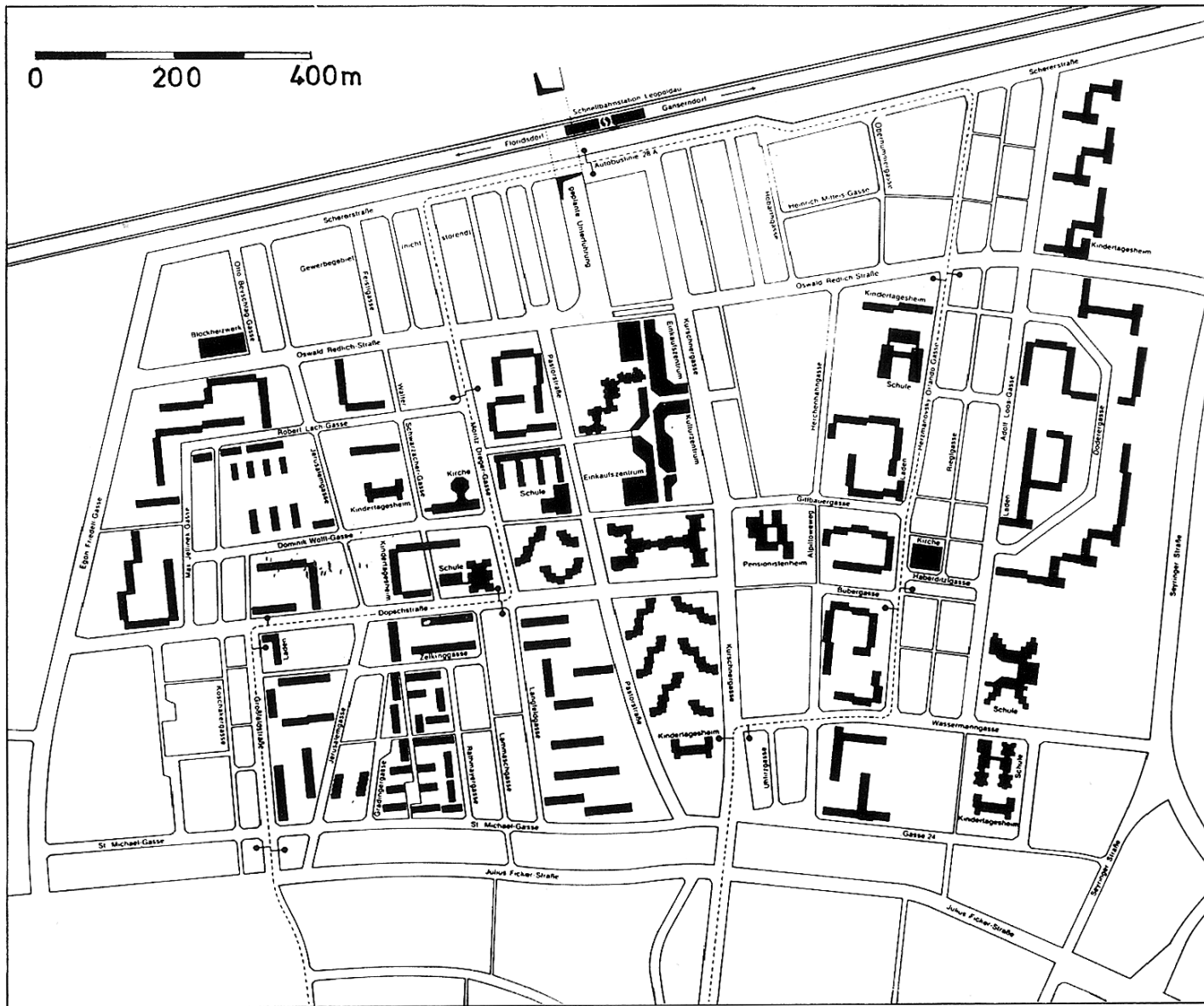
| Develop Gründerzeitblock _ Superblock _ Row development |



Carl Auböck / Carl Rössler / Adolf Hoch | Vorgartenstraße | 1959-62 |



Carl Auböck / Carl Rössler / Adolf Hoch | Vorgartenstraße | 1959-62 |



Großfeldsiedlung | 1965 | Fertigteilbau | 6500 WE |



Großfeldsiedlung | 1965 | Fertigteilbau | 6500 WE |



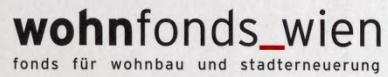


Rob Krier | Breitenfurterstraße | 1988 |



Subsidized Housing in Vienna





wohnfonds_wien
fonds für wohnbau und stadterneuerung

Heute / *today*

220.000 Gemeindewohnungen / council flats
200.000 geförderte Wohnungen / promoted flats
(for renting or as property)

60% der Bevölkerung / of the inhabitants

Stadt Wien / City of Vienna

Grundstücksbeirat

wohnfonds_wien
fonds für wohnbau und stadterneuerung

New building

Basic renewal

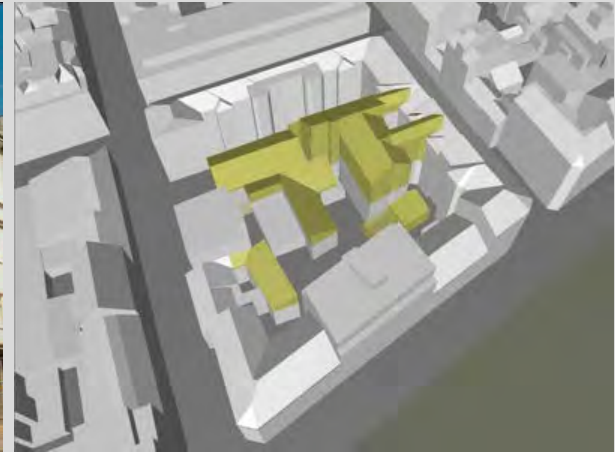
Block renewal



new buildings



renovation



renovation

Wiener Bodenbereitstellungs- und Stadterneuerungsfonds (1984)
Wohn_fonds Wien (1998) – Organisation for subsidized housing



Wolfgang Kratz | Settlement Lockerwiese | 2015 |



Basic renewal | Atelier Kaitna Smetana | 2013 | Hernalser Gürtel |



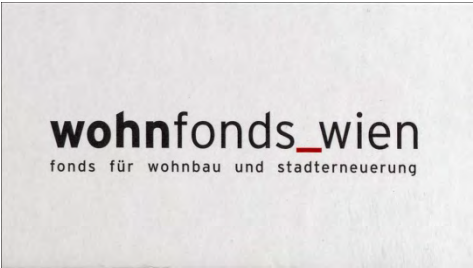
Basis renewal | Atelier Kaitna Smetana | Courtyard | 2013 | Hernalser Gürtel |



Bloc renewal | Roofextension | SIGGS Bauplanung | Sperrgasse | 2004 |



Bloc renewal | Roofextension | SIGGS Bauplanung | Sperrgasse | 2004 |



wohnfonds_wien
fonds für wohnbau und stadterneuerung

Bauträgerwettbewerbe

Vier Säulen / four columns

Promotors Government Vienna

architektonische / architectural
ökologische / ecological
ökonomische / economical
soziale / social

*Competition for building developer
and architects*



Subsidized Housing in Vienna



social housing examples in Vienna

Wohnpark Alterlaa, 1976-85

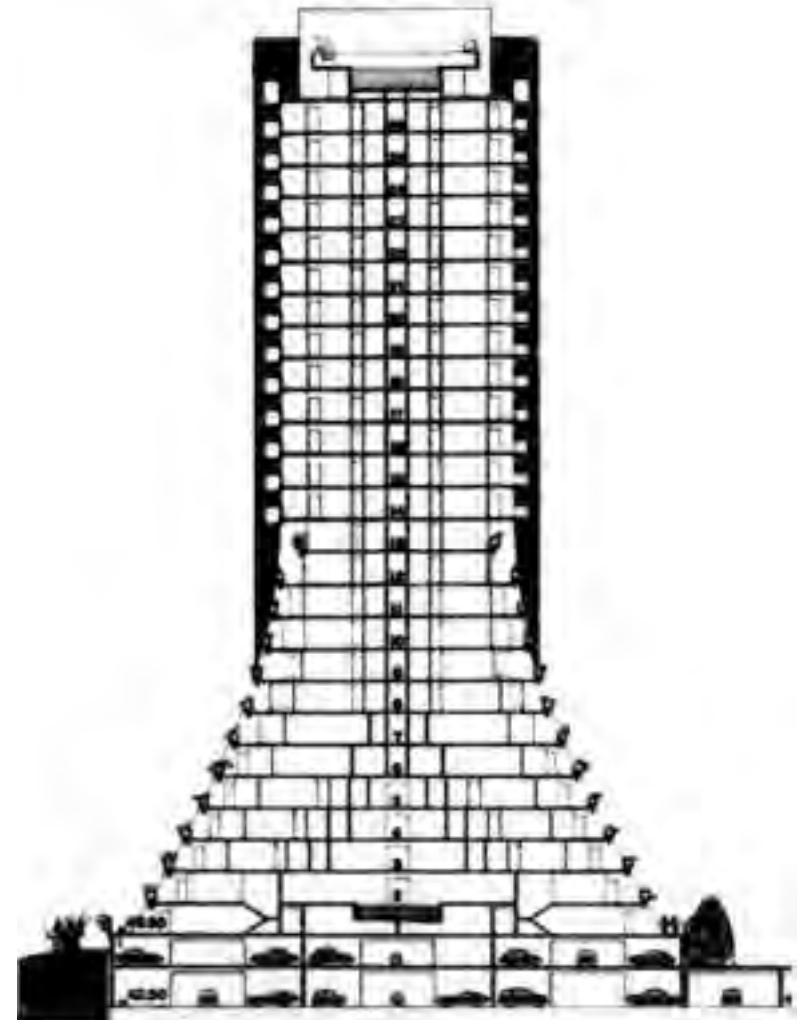
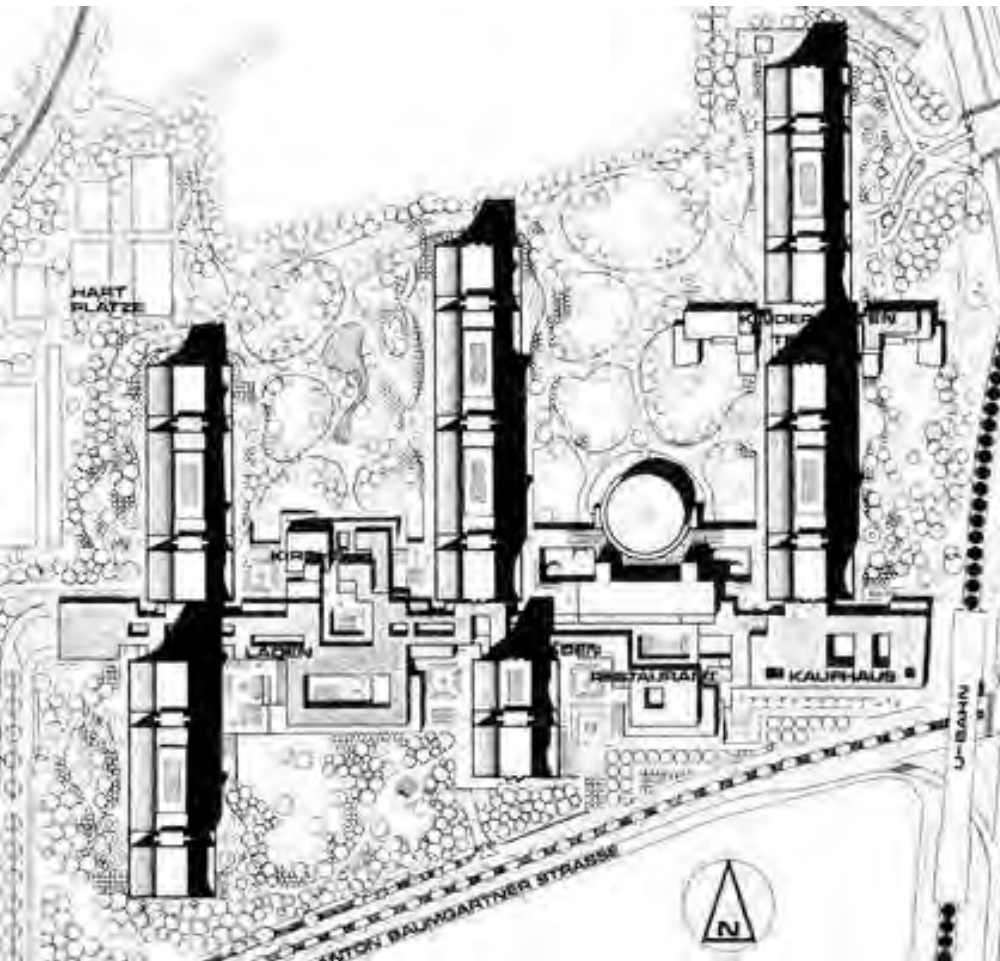
Sargfabrik, 1993-96

Bremer Stadtmusikanten, 2006-09

Wohnprojekt Wien, 2010-13

Wohnzimmer Sonnwendviertel, 2009-15

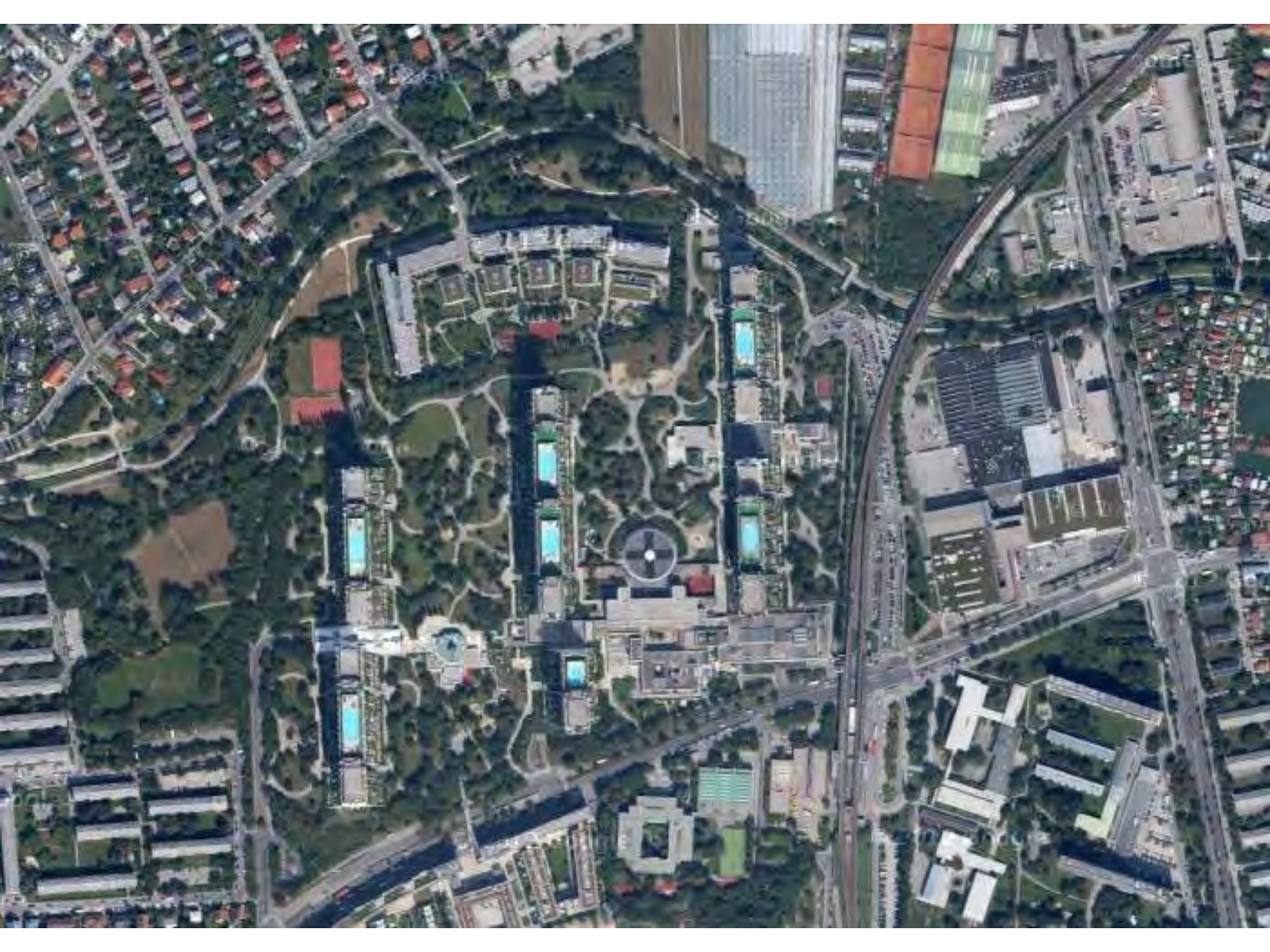
Wohnpark Alterlaa, 1976-85



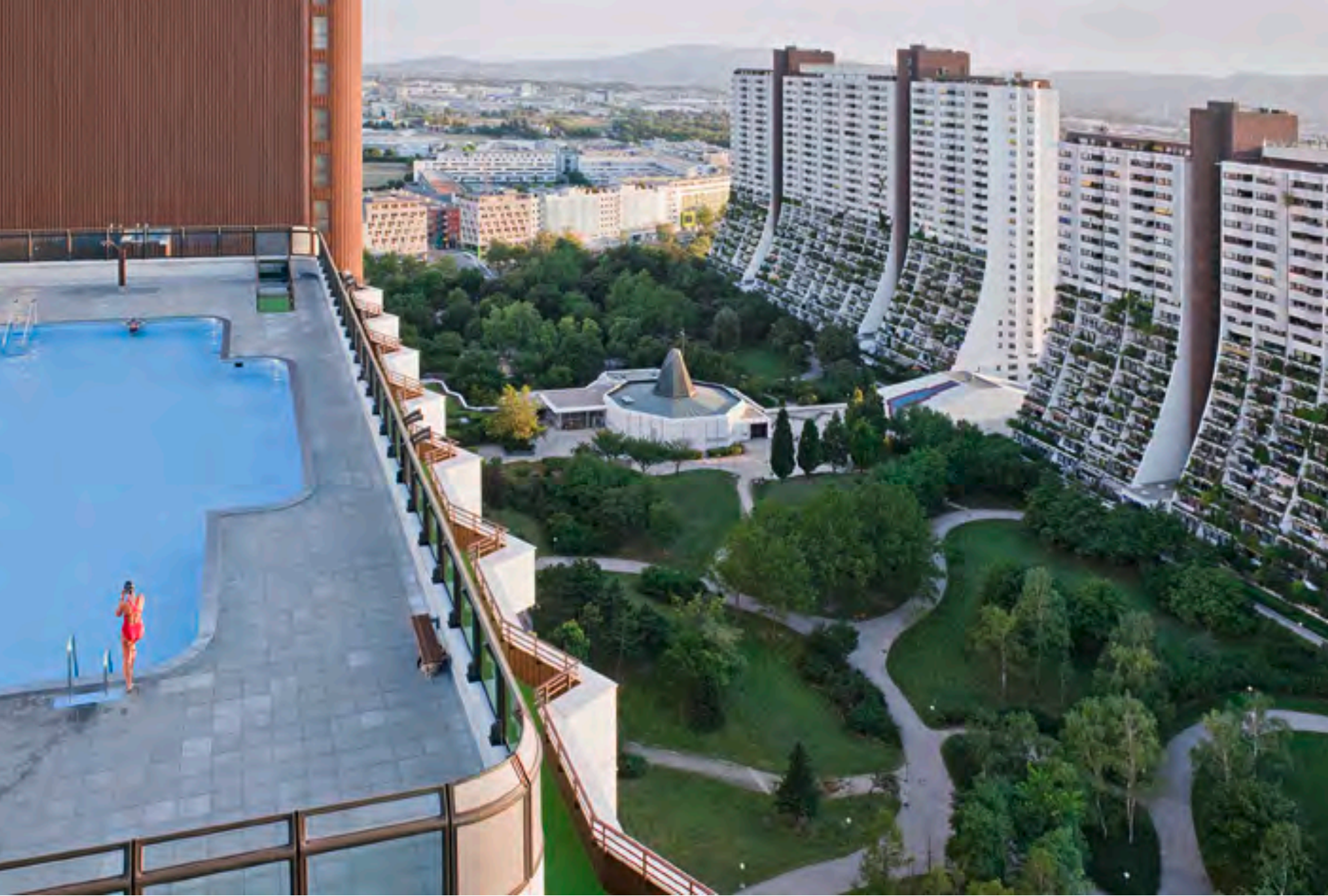
Wohnpark Alt Erlaa, 1976-85

3000 apartments

architects: Harry Glück, Kurt Hlawenicka, Franz Requat, Thomas Reinthaler

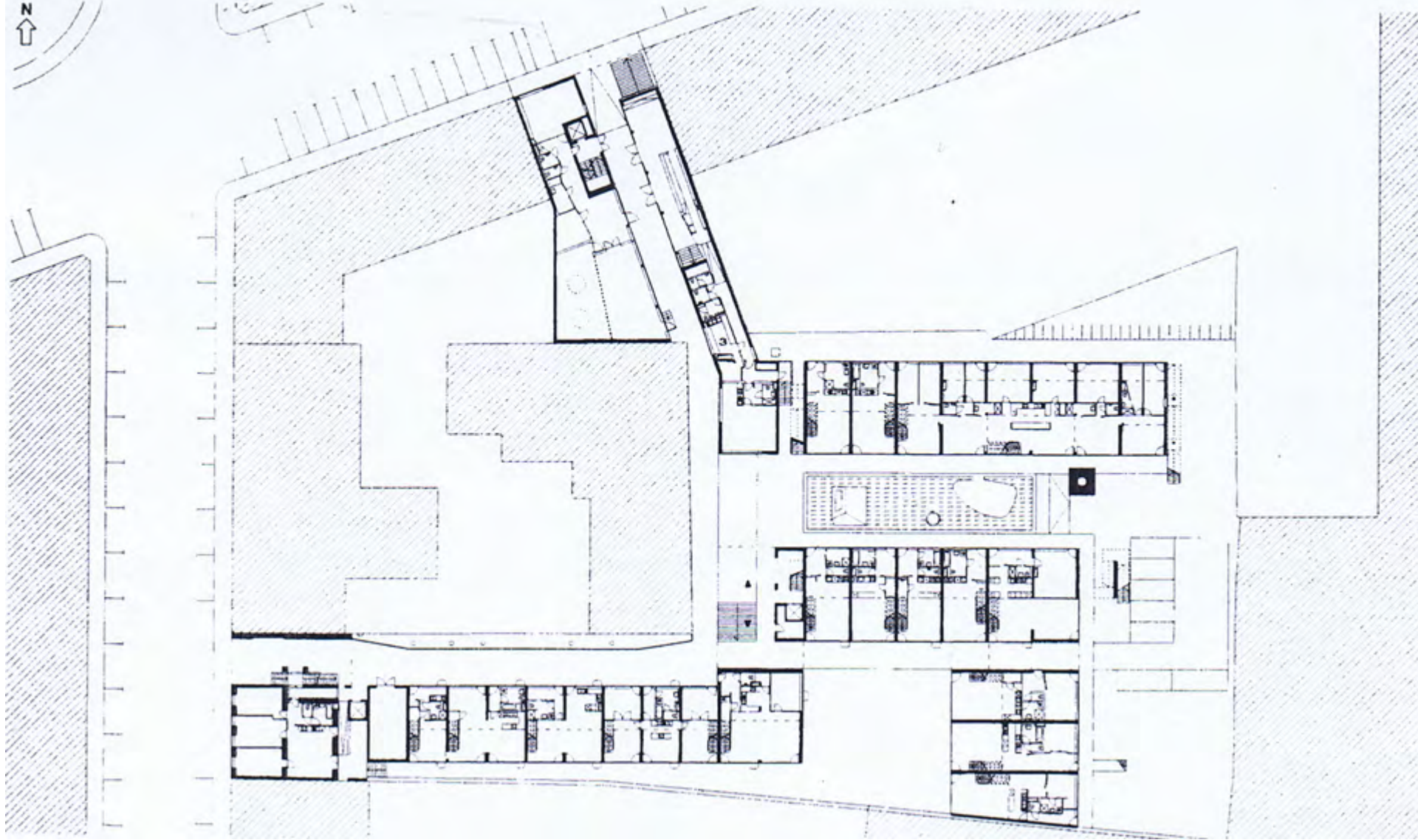








Sargfabrik, 1993-96



Sargfabrik, 1993-96

73 residential units

architects: BKK2







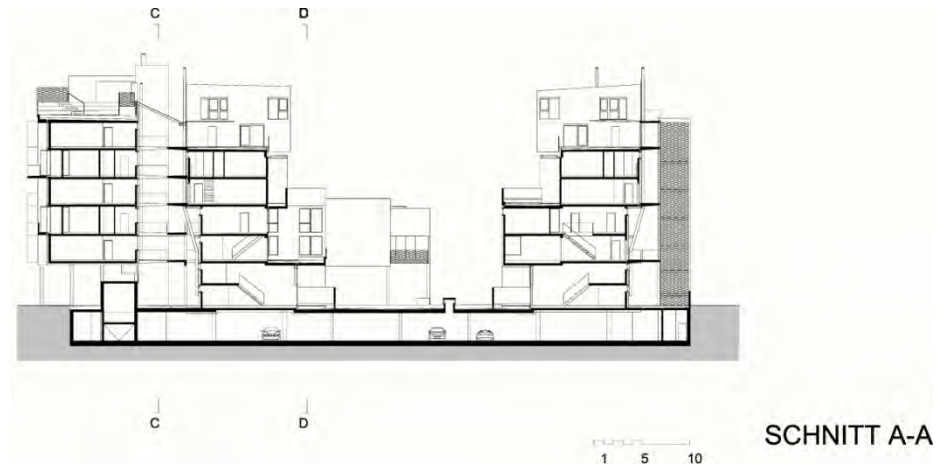






Bremer Stadtmusikanten, 2006-2009

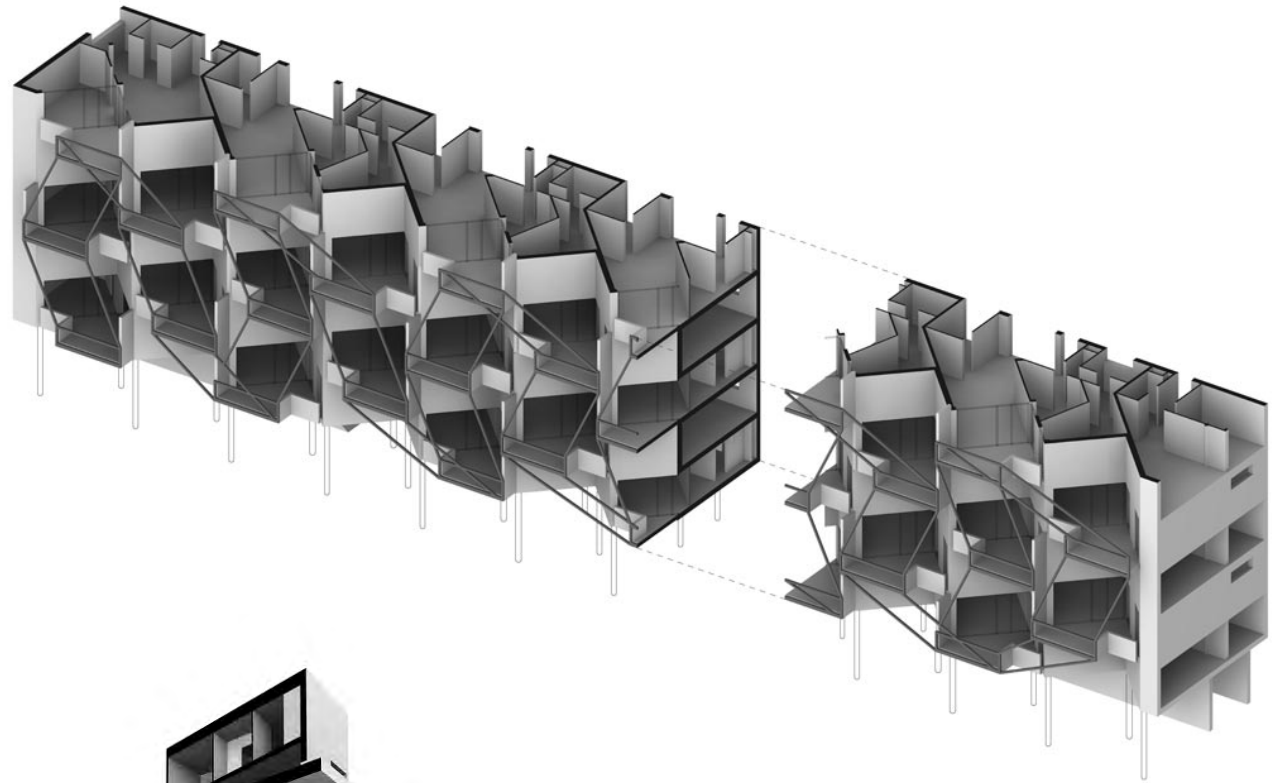




Bremer Stadtmusikanten, 2006-2009

100 apartments

architects: ARTEC – Bettina Götz, Richard Manahl; landscape design: Jakob Fina





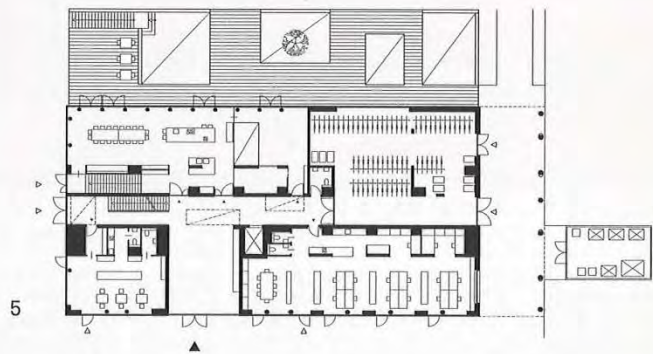
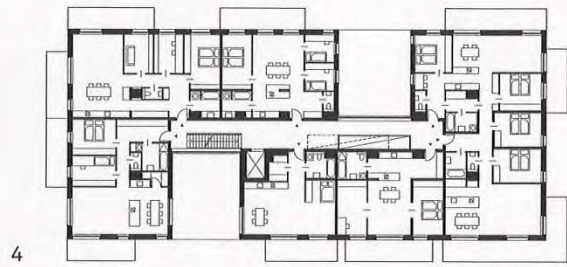
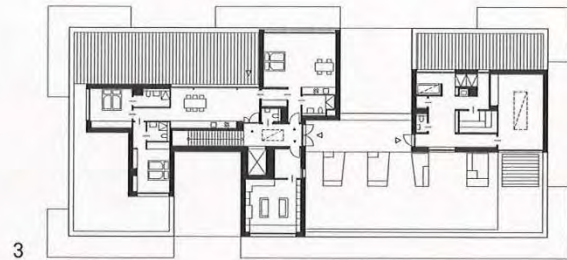
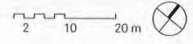
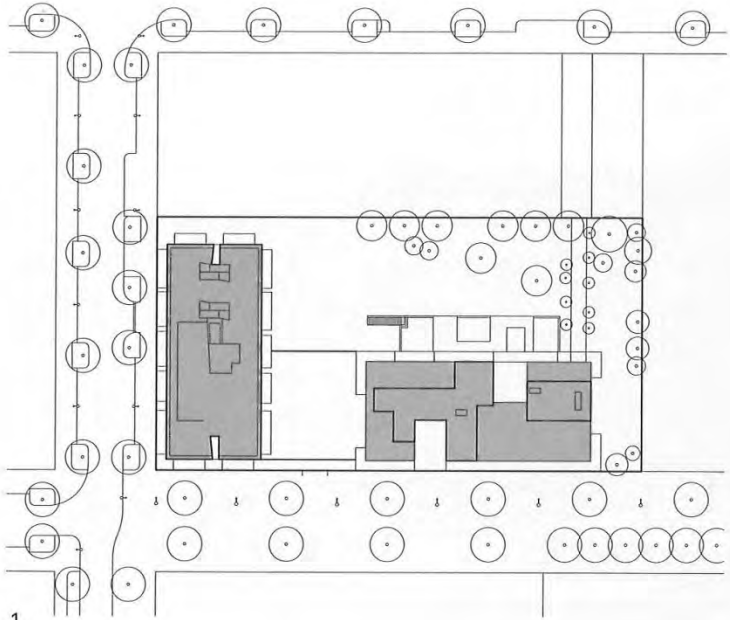


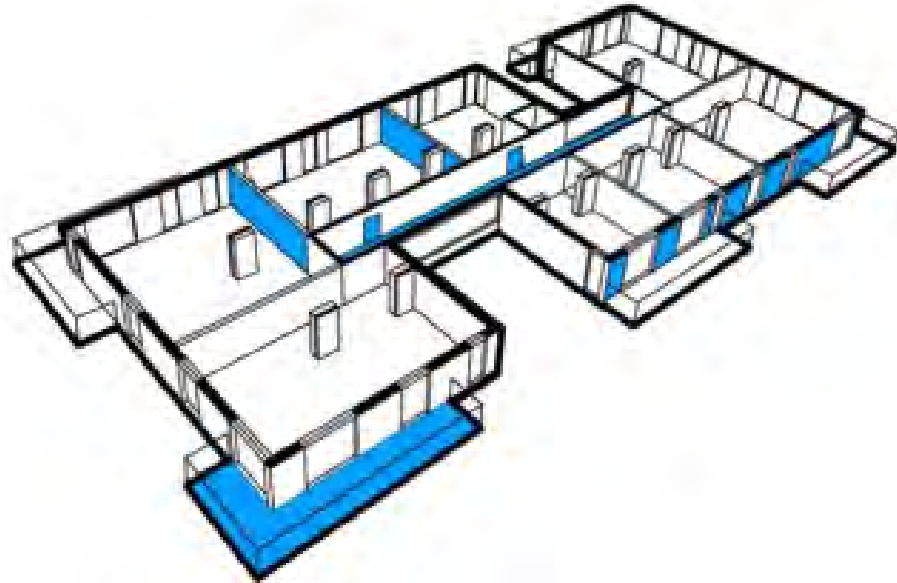


Wohnprojekt Wien, 2010-13

Housing Project Vienna, Association for Sustainable Living











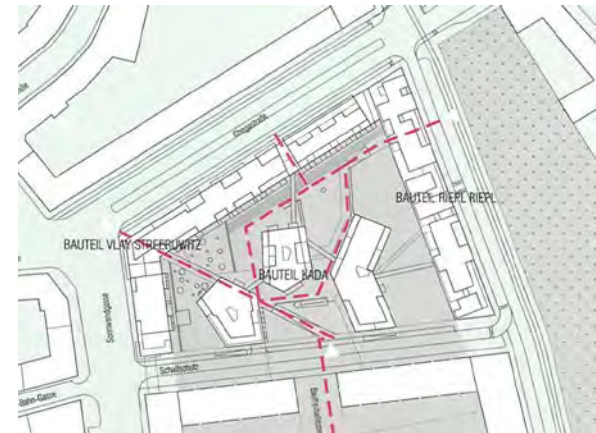
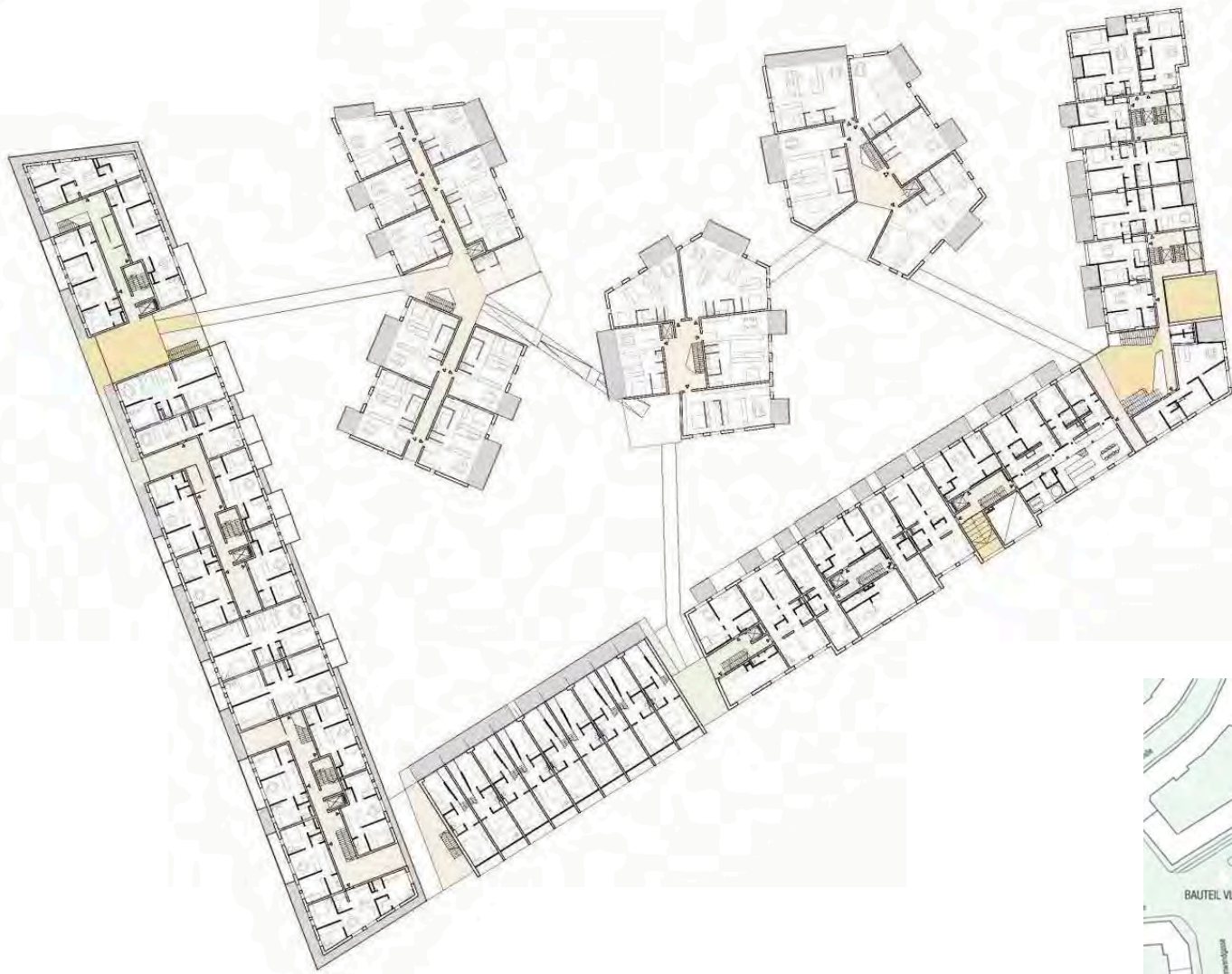




Wohnzimmer Sonnwendviertel , 2009-2015







Wohnzimmer Sonnendviertel , 2009-2015

419 appartements

architects: Klau Kada, Riepl-Riepl, Bernd Vlay + Karoline Streeruwitz; Landschaftsplanung: rajek barosch

